

Annex 6 –

Description of Property	Blackthorn Pharmacy (Land of Blackthorn Road)	Comments – Full planning permission has been granted for a new pharmacy on 14 th February 2018, expiring on 14 th February 2021. The pharmaceutical regulatory body has advised the tenant that the current location based within a supermarket is not big enough for a pharmacy. The current licence of the pharmacy is under review.
UARN/Title Number	60432/ NN55419	
Address	Blackthorn Bridge Court NN3 8QH	
Current Use		
Planning Policy	Emerging Policy (NLPP2) - Policy 19 - Neighbourhood Centres	
Tenant	N/A	
Recommendations	Northampton Borough Council has granted full planning permission for the use of a new build pharmacy on the site at Blackthorn Bridge Court and to sell at market value.	

NOTES
 This drawing is copyright protected and must not be reproduced
 without prior consent of Griffiths Thompson Partnership Ltd
 Do not scale off this drawing

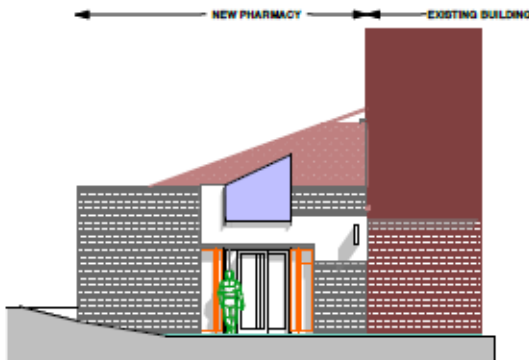


Rev a 18/01/17 Plan revised site position

Job Title Blackthorn Pharmacy	Drawing Name Location Plan	 Griffiths Thompson Partnership <small>Architects • Development Consultants • Project Managers</small> Goodwin House, 32/36 Hanover Street, Liverpool L1 4AN Tel 0151 706 0611 www.griffithsthompson.co.uk		
Client Oakfield Pharma Ltd	Drawing Status Planning	Drawing Scale 1:1250	Layout GT 163 A/ 00 a	Rev Status

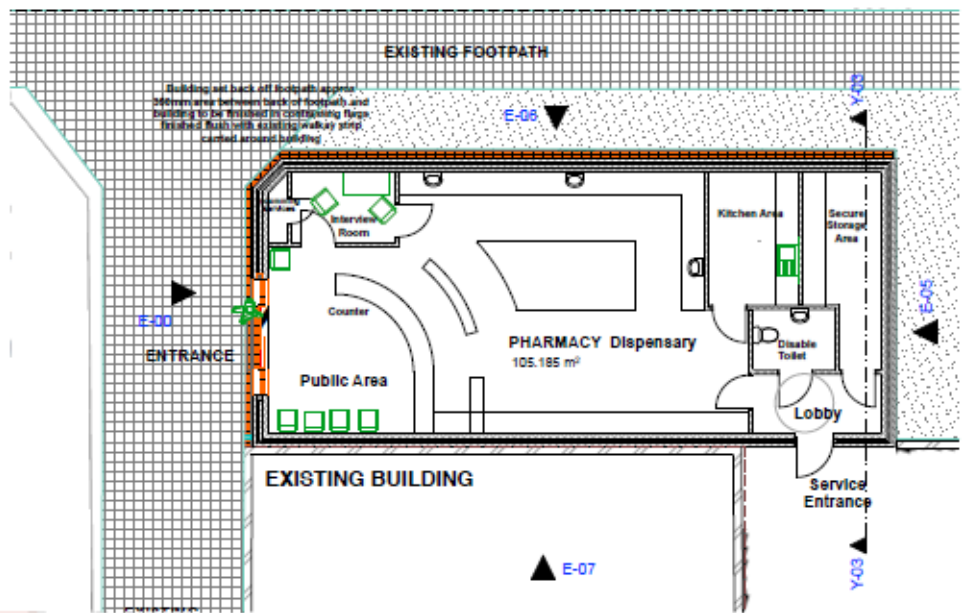
NOTES

This drawing is copyright protected and must not be reproduced without prior consent of Griffiths Thompson Partnership Ltd
Do not scale off this drawing



ENTRANCE ELEVATION

PLAY AREA



Rev a 15/01/17 Plan revised site set back off adopted footpath

Job Title	Drawing Name	Layout	Rev	Status
Blackthorn Pharmacy	Ground Floor, Entrance Elev	GT 163 A /01 /a		
Client	Drawing Status	Drawing Scale		
Oakfield Pharma Ltd	Planning	1:100		

GriffithsThompsonPartnership
Architects • Development Consultants • Project Managers
Geeth House, 22/24 Hanover Street, Liverpool L1 4LN
Tel 0151 706 6611 www.griffithstomson.co.uk